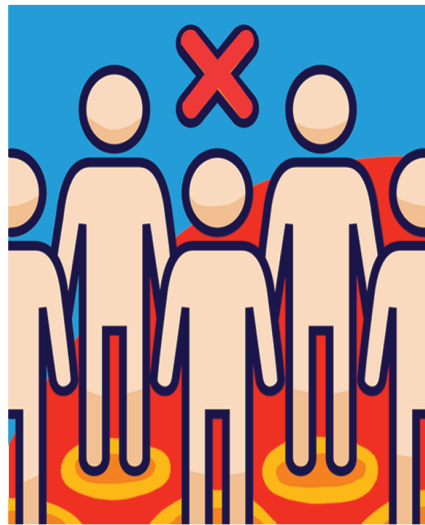


HOMELESSNESS



DON'T
Provide resources directly to homeless persons.**

How can I help and truly make a difference?



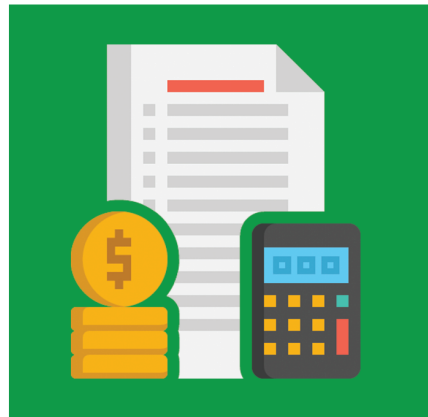
ACKNOWLEDGE
Talk with respect. Homeless people are PEOPLE too.



VOLUNTEER
Volunteer your time and services to local charities.



LEARN ABOUT COMMON CONTRIBUTING ISSUES
Abuse, abandonment, addiction, mental health, cost of housing, employment



DONATE
Give to reputable organizations who are working to address the root causes of homelessness



ENCOURAGE
Encourage homeless persons to obtain help from local charities, shelters and 211

**Make your resources count! Don't give resources directly to homeless persons. Instead, give to established organizations that can help with physical needs as well as mental and addiction issues that may be preventing the person from breaking free from homelessness.



RESOURCES

FOR THOSE IN NEED



(828) 324-2060



www.hickorync.gov/police
hpinfo@hickorync.gov



Hickory Police Department
347 2nd Ave SW
Hickory, NC 28602

WHERE TO GET ASSISTANCE AND HOW TO HELP



Hickory Police Department

Contact our department for more information on our Community Navigator Program.
828-324-2060

BASIC NEEDS

| | | Emergency Shelter | Breakfast | Lunch | Dinner | Food/Hygiene Supplies | Financial Assistance | Clothing | Support Groups/Classes |
|----------------|--------------|-------------------|-----------|-------|--------|-----------------------|----------------------|----------|------------------------|
| Crisis Center | 828-322-8061 | ✓ | ✓ | | ✓ | | ✓ | ✓ | |
| Salvation Army | | | | | | | | | |
| Safe Harbor | 828-326-7233 | ✓ | | ✓ | | | ✓ | | ✓ |
| Rescue Mission | | | | | | | | | |
| Strong Life | 828-994-4321 | ✓ | | | | ✓ | | ✓ | ✓ |
| Rescue Mission | | | | | | | | | |
| Family Care | 828-324-9917 | ✓ | | | | | | | |
| Center | | | | | | | | | |
| Hickory Soup | 828-327-4828 | | | ✓ | | ✓ | | | |
| Kitchen | | | | | | | | | |

ADDITIONAL SERVICES, PROGRAMS AND ORGANIZATIONS

| | | FOOD/HYGIENE SUPPLIES | MEDICAL CARE | MENTAL HEALTH | EMPLOYMENT SERVICES | FINANCIAL ASSISTANCE | PUBLIC TRANSPORTATION | SUPPORT GROUPS/CLASSES |
|-----------------------------------|---|------------------------|--------------|---------------|---------------------|----------------------|-----------------------|------------------------|
| EASTERN CATAWBA COOPERATIVE | | | | | | | | |
| CHRISTIAN MINISTRIES | 828-465-1702 | ✓ | | | | ✓ | | ✓ |
| GREATER HICKORY COOPERATIVE | | | | | | | | |
| CHRISTIAN MINISTRY | 828-327-0979 | ✓ | ✓ | | | | | ✓ |
| WOMEN'S RESOURCE CENTER | 828-322-6333 | ✓ | | | | | | ✓ |
| FAMILY GUIDANCE CENTER | 828-322-1400 | | | ✓ | | | | ✓ |
| CATAWBA VALLEY BEHAVIORAL HEALTH | 828-695-5900 | | | ✓ | | | | |
| PARTNERS BEHAVIORAL HEALTH MGT. | 888-235-4673 | | | ✓ | | | | |
| WESTERN PIEDMONT COUNCIL OF GOV. | | | | | | | | |
| REGIONAL HOUSING AUTHORITY | 828-322-9191 | | | | | ✓ | | |
| CITY OF HICKORY PUBLIC HOUSING | 828-328-5373 | | | | | ✓ | | |
| NATIONAL CENTER FOR HOMELESS | 1-877-424-3838 | | | | | ✓ | | |
| CATAWBA VALLEY MEDICAL CENTER | 828-326-3000 | | ✓ | | | | | |
| FRYE REGIONAL MEDICAL CENTER | 828-322-6070 | | ✓ | | | | | |
| CATAWBA CO. JOBLINK CAREER CENTER | 828-466-5596 | | | | ✓ | | | |
| N.C. WORKS CAREER CENTER | 828-466-5535 | | | | ✓ | | | |
| OFFENDER EMPLOYMENT RESOURCE - | | | | | | | | |
| HICKORY POLICE DEPARTMENT | 828-324-2060 | | | | ✓ | | | |
| GREENWAY PUBLIC TRANSPORTATION | 828-465-7640 | | | | | | ✓ | |
| CATAWBA COUNTY PUBLIC HEALTH | 828-695-5800 | | ✓ | ✓ | | | | |
| AA GROUPS | https://aanorthcarolina.org/meetings | | | | | | | ✓ |
| NA GROUPS | https://www.na.org/meetingsearch | | | | | | | ✓ |
| DEPARTMENT OF SOCIAL SERVICES | 828-695-5600 | DSS - CONTACT FOR INFO | | | | | | |

NORTH CAROLINA
SERVICES DIRECTORY
@ 211 www.nc211.org